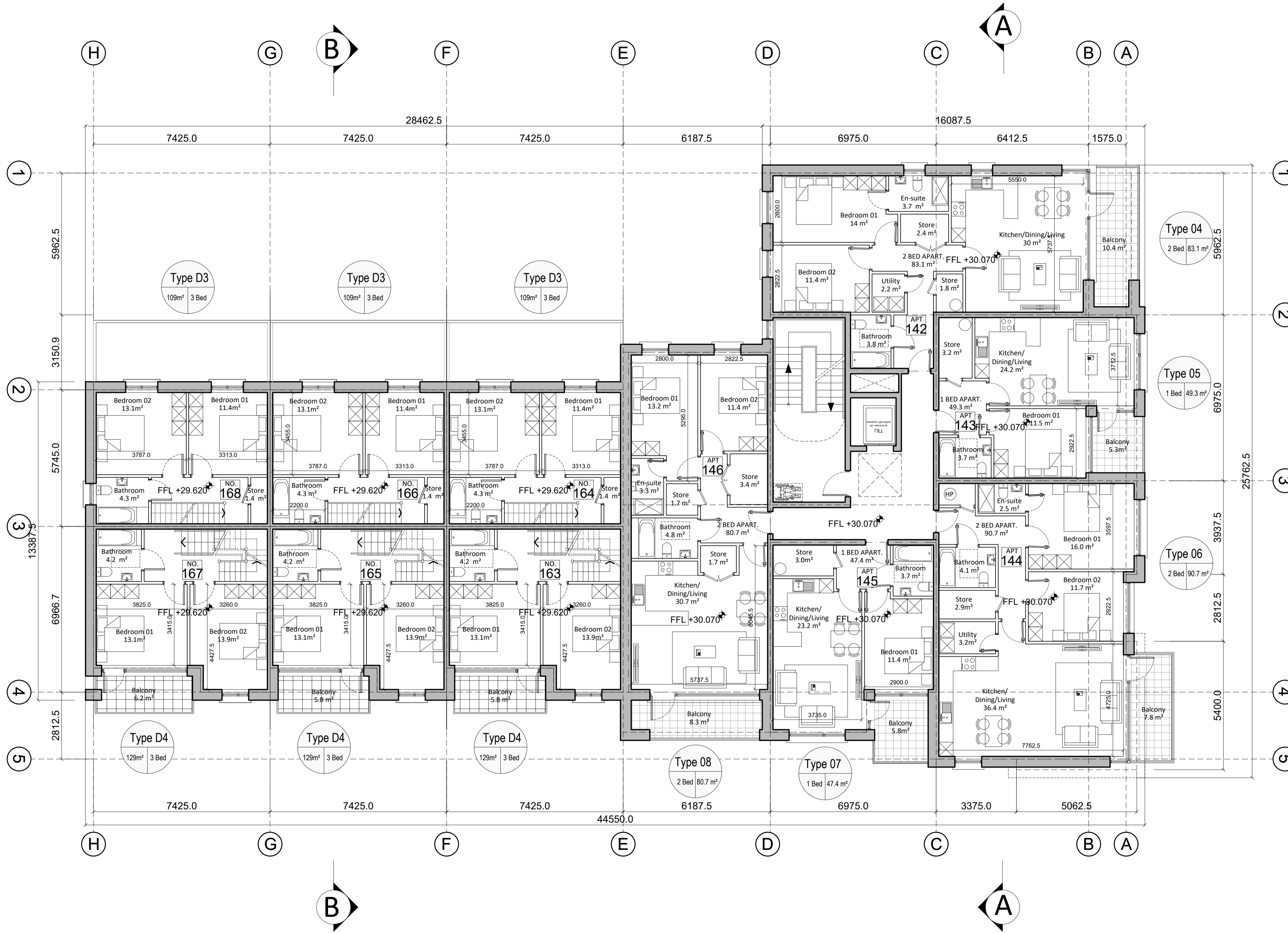


# Block 6

## FIRST FLOOR PLAN

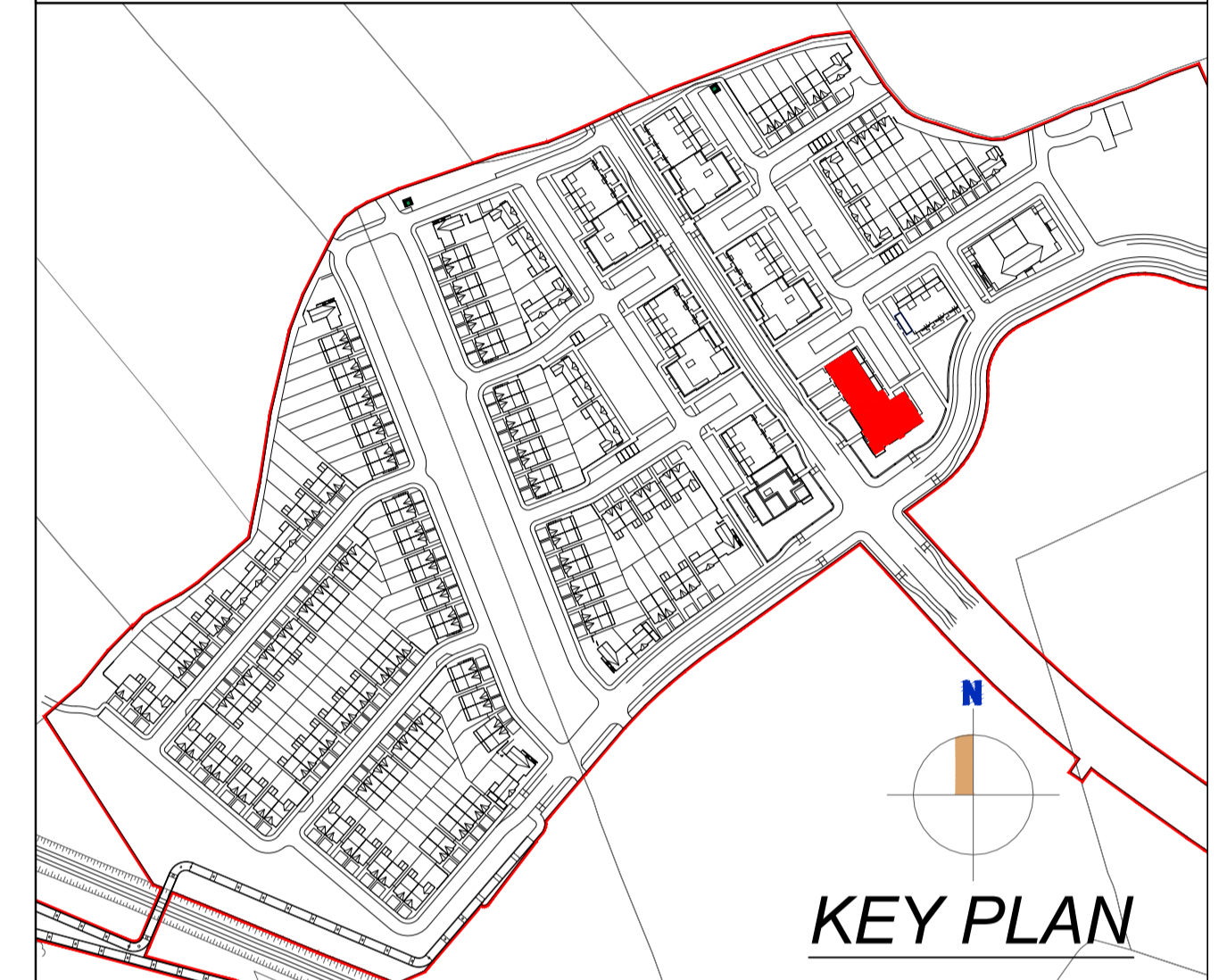


First Floor Plan

**NOTE:**  
Do not scale from this drawing, written dimensions only to be used. This drawing is for planning purposes only & not for construction. Levels shown are for information purposes only & may not relate to O.S. Malin Head Datum.  
For actual O.S. Malin Head Datum always refer to the Site Layout Plan.  
DDA Architects Ltd. retain copyright and ownership of this design which is not transferable.

### MATERIALS :

- ROOF** SELECTED STANDING SEAM ROOF FINISH/  
SEDUM ROOF
- WALLS** SELECTED BRICK OR SELF COLOUR RENDERED BLOCK WORK,  
SELECTED STONE PANEL FINISH  
SELECTED ZINC COATED ALUMINIUM WALL PANEL.
- WINDOWS** SELECTED U-PVC OR TIMBER DOUBLE GLAZED WINDOWS.
- FRONT DOOR** SELECTED U-PVC OR TIMBER FINISH DOOR WITH DOUBLE  
GLAZED VISION PANELS.
- RAIN WATER GOODS** U-PVC OR TIMBER FASCIA AND SOFFITT.WITH UPVC OR  
ALUMINIUM POWDER COATED GUTTERS & DOWNPIPES
- CANOPY** ALUMINIUM CLAD CANOPY.
- COPINGS, WINDOW SURROUNDS & CILLS** CONCRETE CILLS WITH WRAP AROUND D.P.C. AND  
INSULATION BEHIND.



Block 06 24 No. Apartments - 6 No. Own Door Duplex

| APARTMENT TYPE | SPACE PROVISION AND ROOM SIZES FOR TYPICAL DWELLINGS |                       |                        |                    |                     |
|----------------|--|-----------------------|------------------------|--------------------|---------------------|
|                | TARGET GROSS FLOOR AREA                              | AGGREGATE LIVING AREA | AGGREGATE BEDROOM AREA | STORAGE            | AMENITY SPACE       |
| Reg 1 Bed Apt. | 45 m <sup>2</sup>                                    | 23 m <sup>2</sup>     | 11.4 m <sup>2</sup>    | 3 m <sup>2</sup>   | 5 m <sup>2</sup>    |
| Type 01        | 55.4 m <sup>2</sup>                                  | 30.7 m <sup>2</sup>   | 12.5 m <sup>2</sup>    | 3.5 m <sup>2</sup> | 5.9 m <sup>2</sup>  |
| Reg 2 Bed Apt. | 73 m <sup>2</sup>                                    | 30 m <sup>2</sup>     | 24.4 m <sup>2</sup>    | 6 m <sup>2</sup>   | 7 m <sup>2</sup>    |
| Type 02        | 89.1 m <sup>2</sup>                                  | 36.4 m <sup>2</sup>   | 26.1 m <sup>2</sup>    | 6.1 m <sup>2</sup> | 7.8 m <sup>2</sup>  |
| Reg 1 Bed Apt. | 45 m <sup>2</sup>                                    | 23 m <sup>2</sup>     | 11.4 m <sup>2</sup>    | 3 m <sup>2</sup>   | 5 m <sup>2</sup>    |
| Type 03        | 61.9 m <sup>2</sup>                                  | 26.5 m <sup>2</sup>   | 15.1 m <sup>2</sup>    | 5.3 m <sup>2</sup> | 7.7 m <sup>2</sup>  |
| Reg 2 Bed Apt. | 73 m <sup>2</sup>                                    | 30 m <sup>2</sup>     | 24.4 m <sup>2</sup>    | 6 m <sup>2</sup>   | 7 m <sup>2</sup>    |
| Type 04        | 83.1 m <sup>2</sup>                                  | 30 m <sup>2</sup>     | 25.4 m <sup>2</sup>    | 6.4 m <sup>2</sup> | 10.4 m <sup>2</sup> |
| Reg 1 Bed Apt. | 45 m <sup>2</sup>                                    | 23 m <sup>2</sup>     | 11.4 m <sup>2</sup>    | 3 m <sup>2</sup>   | 5 m <sup>2</sup>    |
| Type 05        | 49.3 m <sup>2</sup>                                  | 24.2 m <sup>2</sup>   | 11.5 m <sup>2</sup>    | 3.2 m <sup>2</sup> | 5.3 m <sup>2</sup>  |
| Reg 2 Bed Apt. | 73 m <sup>2</sup>                                    | 30 m <sup>2</sup>     | 24.4 m <sup>2</sup>    | 6 m <sup>2</sup>   | 7 m <sup>2</sup>    |
| Type 06        | 90.7 m <sup>2</sup>                                  | 36.4 m <sup>2</sup>   | 27.7 m <sup>2</sup>    | 6.3 m <sup>2</sup> | 7.8 m <sup>2</sup>  |
| Reg 1 Bed Apt. | 45 m <sup>2</sup>                                    | 23 m <sup>2</sup>     | 11.4 m <sup>2</sup>    | 3 m <sup>2</sup>   | 5 m <sup>2</sup>    |
| Type 07        | 47.4 m <sup>2</sup>                                  | 23.2 m <sup>2</sup>   | 11.4 m <sup>2</sup>    | 3 m <sup>2</sup>   | 5.8 m <sup>2</sup>  |
| Reg 2 Bed Apt. | 73 m <sup>2</sup>                                    | 30 m <sup>2</sup>     | 24.4 m <sup>2</sup>    | 6 m <sup>2</sup>   | 7 m <sup>2</sup>    |
| Type 08        | 80.7 m <sup>2</sup>                                  | 30.7 m <sup>2</sup>   | 24.6 m <sup>2</sup>    | 6.8 m <sup>2</sup> | 8.3 m <sup>2</sup>  |
| Reg 2 Bed Apt. | 73 m <sup>2</sup>                                    | 30 m <sup>2</sup>     | 24.4 m <sup>2</sup>    | 6 m <sup>2</sup>   | 7 m <sup>2</sup>    |
| Type 09        | 95 m <sup>2</sup>                                    | 40.8 m <sup>2</sup>   | 27.7 m <sup>2</sup>    | 6.3 m <sup>2</sup> | 8.6 m <sup>2</sup>  |
| Reg 2 Bed Apt. | 73 m <sup>2</sup>                                    | 30 m <sup>2</sup>     | 24.4 m <sup>2</sup>    | 6 m <sup>2</sup>   | 7 m <sup>2</sup>    |
| Type 10        | 93.4 m <sup>2</sup>                                  | 40.8 m <sup>2</sup>   | 26.1 m <sup>2</sup>    | 6.1 m <sup>2</sup> | 8.6 m <sup>2</sup>  |
| Reg 1 Bed Apt. | 45 m <sup>2</sup>                                    | 23 m <sup>2</sup>     | 11.4 m <sup>2</sup>    | 3 m <sup>2</sup>   | 5 m <sup>2</sup>    |
| Type 11        | 45.8 m <sup>2</sup>                                  | 23.1 m <sup>2</sup>   | 11.4 m <sup>2</sup>    | 3.4 m <sup>2</sup> | 11.1 m <sup>2</sup> |
| Reg 1 Bed Apt. | 45 m <sup>2</sup>                                    | 23 m <sup>2</sup>     | 11.4 m <sup>2</sup>    | 3 m <sup>2</sup>   | 5 m <sup>2</sup>    |
| Type 17        | 49.3 m <sup>2</sup>                                  | 24.2 m <sup>2</sup>   | 11.5 m <sup>2</sup>    | 3.2 m <sup>2</sup> | 8.8 m <sup>2</sup>  |
| Reg 3 Bed Apt. | 90 m <sup>2</sup>                                    | 34 m <sup>2</sup>     | 31.5 m <sup>2</sup>    | 9 m <sup>2</sup>   | 9 m <sup>2</sup>    |
| Duplex Type D3 | 109 m <sup>2</sup>                                   | 34.3 m <sup>2</sup>   | 36.1 m <sup>2</sup>    | 9 m <sup>2</sup>   | 17.9 m <sup>2</sup> |
| Reg 3 Bed Apt. | 90 m <sup>2</sup>                                    | 34 m <sup>2</sup>     | 31.5 m <sup>2</sup>    | 9 m <sup>2</sup>   | 9 m <sup>2</sup>    |
| Duplex Type D4 | 129 m <sup>2</sup>                                   | 41.4 m <sup>2</sup>   | 40.4 m <sup>2</sup>    | 10 m <sup>2</sup>  | 11.6 m <sup>2</sup> |

| REV | DATE | DRAWN |
|-----|------|-------|
| -   | -    | -     |
| -   | -    | -     |
| -   | -    | -     |
| -   | -    | -     |
| -   | -    | -     |
| -   | -    | -     |
| -   | -    | -     |
| -   | -    | -     |
| -   | -    | -     |

**DDA DUIGAN DOOLEY**  
ARCHITECTS AND PLANNING CONSULTANTS  
62 BRIGHTON SQUARE, DUBLIN 6

TEL : 00 353 (1) 490 0499  
EMAIL : info@ddaarch.ie  
WEB : www.ddaarch.ie

**RIA**

|   |   |                                      |  |                             |
|---|---|--------------------------------------|--|-----------------------------|
| THIS DRAWING IS COPYRIGHT ©<br>FIGURES DIMENSIONS ONLY TO BE USED | STATUS<br><b>PLANNING</b>               | CLIENT<br>SHANNON HOMES DROGHEDA LTD | PROJECT TITLE<br>COLP WEST SHD<br>DROGHEDA | CD:<br>PD                   |
| DRAWING TITLE<br><b>BLOCK 6<br/>FIRST FLOOR PLAN</b>              | DRAWING NUMBER<br><b>19-001-P-3.601</b> | DRAWN<br>BC                          | DATE<br>OCT 2019                           | SCALE<br>1:100@A1; 1:200@A3 |